

СНР, PSD, PD

Технические характеристики

По вопросам продаж и поддержки обращайтесь:

Алматы (7273)495-231	Казань (843)206-01-48	Новокузнецк (3843)20-46-81	Смоленск (4812)29-41-54
Архангельск (8182)63-90-72	Калининград (4012)72-03-81	Новосибирск (383)227-86-73	Сочи (862)225-72-31
Астрахань (8512)99-46-04	Калуга (4842)92-23-67	Омск (3812)21-46-40	Ставрополь (8652)20-65-13
Барнаул (3852)73-04-60	Кемерово (3842)65-04-62	Орел (4862)44-53-42	Сургут (3462)77-98-35
Белгород (4722)40-23-64	Киров (8332)68-02-04	Оренбург (3532)37-68-04	Тверь (4822)63-31-35
Брянск (4832)59-03-52	Краснодар (861)203-40-90	Пенза (8412)22-31-16	Томск (3822)98-41-53
Владивосток (423)249-28-31	Красноярск (391)204-63-61	Пермь (342)205-81-47	Тула (4872)74-02-29
Волгоград (844)278-03-48	Курск (4712)77-13-04	Ростов-на-Дону (863)308-18-15	Тюмень (3452)66-21-18
Вологда (8172)26-41-59	Липецк (4742)52-20-81	Рязань (4912)46-61-64	Ульяновск (8422)24-23-59
Воронеж (473)204-51-73	Магнитогорск (3519)55-03-13	Самара (846)206-03-16	Уфа (347)229-48-12
Екатеринбург (343)384-55-89	Москва (495)268-04-70	Санкт-Петербург (812)309-46-40	Хабаровск (4212)92-98-04
Иваново (4932)77-34-06	Мурманск (8152)59-64-93	Саратов (845)249-38-78	Челябинск (351)202-03-61
Ижевск (3412)26-03-58	Набережные Челны (8552)20-53-41	Севастополь (8692)22-31-93	Череповец (8202)49-02-64
Иркутск (395)279-98-46	Нижний Новгород (831)429-08-12	Симферополь (3652)67-13-56	Ярославль (4852)69-52-93
Россия (495)268-04-70	Киргизия (996)312-96-26-47	Казахстан (7172)727-132	



Diesel Pumps CHP

CHP Diesel Centrifugal Carified Water Pump Coupled with Electric Motor Supplier

Features

- 100% pure aluminum pump body and crankcase
- Durable and high performance Engine easy operating and offer ample power in the toughest conditions
- Isolation-mounted engine and pump vibration, preventing the pump from "walking" away or "burying" itself in soft soil and reduces wear on components for increased durability
- Reinforced hosing and chemical resistance volute and impeller

Product Specification (50HZ)

Product Description



Model	CHP-205D(E)	CHP-305D(E)	CHP-405D(E)	CHP-605D(E)
Type	Self-priming centrifugal pump			
Suction*delivery(mm)(inch)	50*50/2*2	80*80/3*3	100*100/4*4	155*155/6*6
Total Head(m)	46	32	28	15
Suction Head (m)	8	8	8	6
Max delivery volume(m ³ /h)	36	60	80	200
Mechanical seal	Ceramic Carbon			
Engine model	CH170F(E)	CH178F(E)	CH186F(E)	188-190F
Fuel tank capacity(L)	2.5	3.5	5.5	15
Starting system	Manual/Electric start			
Packing size(L*W*H)mm	520*420*380	570*465*560	690*535*560	785*600*790
Net weight(KG)	32	46	65	130

Model	CHP-205D(E)-1	CHP-305D(E)-1	CHP-405D(E)-1
Type	Self-priming centrifugal pump		

Suction*delivery(mm)(inch)	50*50/2*2	80*80/3*3	100*100/4*4
Total Head(m)	46	32	28
Suction Head (m)	8	8	8
Max delivery volume(m3/h)	36	60	80
Mechanical seal	Ceramic Carbon		
Engine model	CH170F(E)	CH178F(E)	CH186F(E)
Fuel tank capacity(L)	12.5	12.5	12.5
Starting system	Manual/Electric start		
Packing size(L*W*H)mm	535*464*615	590*465*660	690*510*720
Net weight(KG)	38	50	70

Model	CHWP205B	CHWP305B	CHWP405B	CHWP205D
Type	Self-priming centrifugal pump			
Suction*delivery(mm)(inch)	2"	3"	4"	50*50/2*2
Total Head(m)	46	32	28	46
Suction Head (m)	8	8	8	8
Max delivery volume(m3/h)	36	80	80	36
Mechanical seal	Ceramic Carbon			
Engine model	CH160	CH200	CH390	CH170F
Fuel tank capacity(L)	3.5	3.5	6	2.5
Starting system	Manual/Electric start			
Packing size(L*W*H)mm	485*385*380	510*385*425	625*455*545	535*445*495
Net weight(KG)	26	28	47	32

Product Specification (60HZ)

Product Description



Model	CHP-205D(E)	CHP-305D(E)	CHP-405D(E)	CHP-605D(E)
Type	Self-priming centrifugal pump			
Suction*delivery(mm)(inch)	50*50/2*2	80*80/3*3	100*100/4*4	155*155/6*6
Total Head(m)	46	32	28	15
Suction Head (m)	8	8	8	6
Max delivery volume(m3/h)	36	60	80	200
Mechanical seal	Ceramic Carbon			
Engine model	CH170F(E)	CH178F(E)	CH186F(E)	188-190F
Fuel tank capacity(L)	2.5	3.5	5.5	15
Starting system	Manual/Electric start			
Packing size(L*W*H)mm	520*420*380	570*465*560	690*535*560	785*600*790
Net weight(KG)	32	46	65	130

Model	CHP-205D(E)-1	CHP-305D(E)-1	CHP-405D(E)-1
Type	Self-priming centrifugal pump		

Suction*delivery(mm)(inch)	50*50/2*2	80*80/3*3	100*100/4*4
Total Head(m)	46	32	28
Suction Head (m)	8	8	8
Max delivery volume(m3/h)	36	60	80
Mechanical seal	Ceramic Carbon		
Engine model	CH170F(E)	CH178F(E)	CH186F(E)
Fuel tank capacity(L)	12.5	12.5	12.5
Starting system	Manual/Electric start		
Packing size(L*W*H)mm	535*464*615	590*465*660	690*510*720
Net weight(KG)	38	50	70

Model	CHWP205B	CHWP305B	CHWP405B	CHWP205D
Type	Self-priming centrifugal pump			
Suction*delivery(mm)(inch)	2"	3"	4"	50*50/2*2
Total Head(m)	46	32	28	46
Suction Head (m)	8	8	8	8
Max delivery volume(m3/h)	36	80	80	36
Mechanical seal	Ceramic Carbon			
Engine model	CH160	CH200	CH390	CH170F
Fuel tank capacity(L)	3.5	3.5	6	2.5
Starting system	Manual/Electric start			
Packing size(L*W*H)mm	485*385*380	510*385*425	625*455*545	535*445*495
Net weight(KG)	26	28	47	32



Diesel Pumps PSD

**[PSD]Centrifugal Pump Couled with Diesel Engine for Fire Fighting
From Purity**

TECHNICAL DESCRIPTION

More Environmentally Friendly

Meeting China III Emission Standard

Low Fuel Consumption

Strong Power

Easy To Assemble

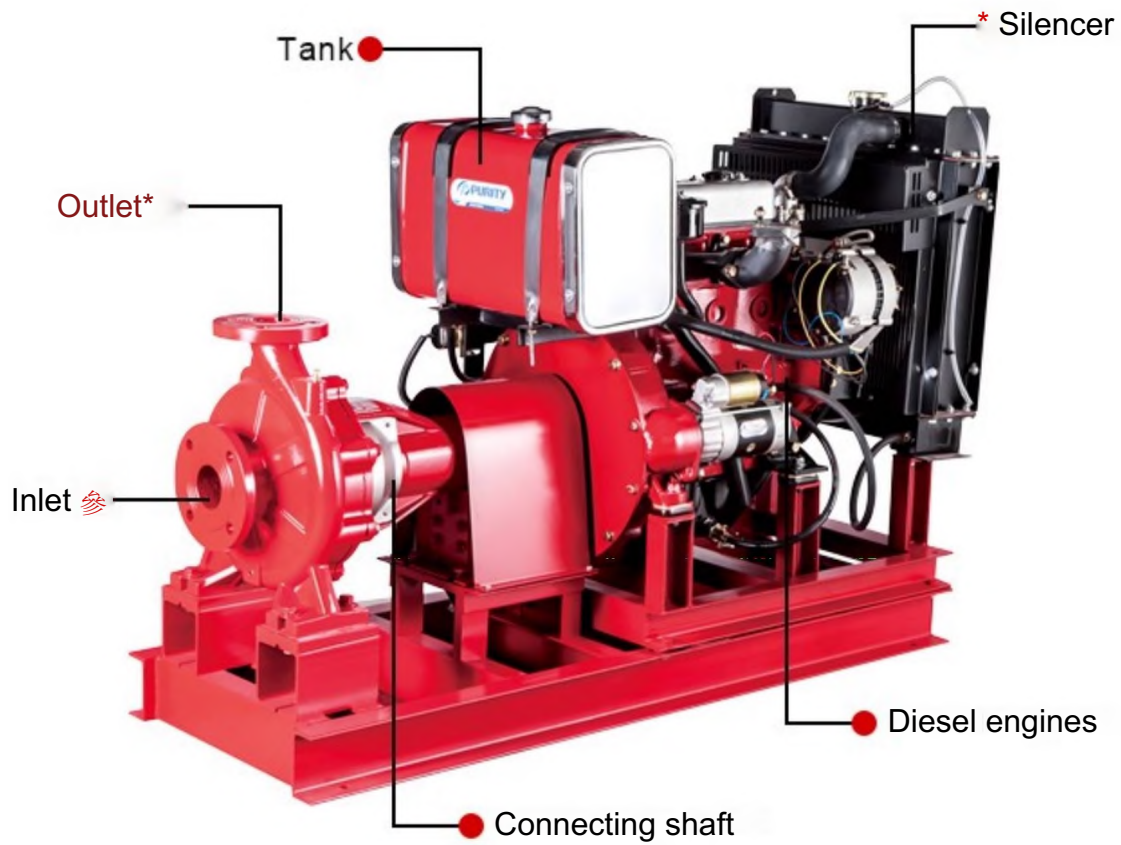
Fire Pump Coupling Diesel Engine



PRODUCT INFORMATION

電^

、;、凝n夕、





PS



PD

A combination

**PS
+
PD
=
PSD**



PSD

TECHNICAL DESCRIPTION

- ^More Environmentally Friendly
- ^Meeting China III Emission Standard
- ^Low Fuel Consumption
- x Strong Power
- ※ Easy To Assemble

APPLICATIONS

Suitable for use with clean water and liquids that are not chemically aggressive towards the materials from which the pump is made. The diesel engine pumps are recommended for use in water supply, cleaning sets, pressure boosting, firefighting sets, irrigation, industrial applications, water circulation in climatisation sets, agricultural.

USING LIMITS

Liquid temperature between -10°C and +120°C

Ambient temperature up to +50°C

Max. working pressure 16 bar

Continuous service S1

TECHNICAL DATAS

Model	178	186	188	192	380	385	480	485	490N	490	495	
Type	Single-cylinder, 4-stroke, air-cooled				Direct Injection, Water-cooling, Four Stroke							
Intake Type	Naturally Aspirated											
Bore*Stroke(mm*mm)	78*62	86*72	88*75	92*75	80*90	85*90	80*90	85*100	90*100	90*105	95*105	
Cylinder No.	1	1	1	1	3	3	4	4	4	4	4	
Displacement (L)	0.296	0.418	0.456	0.499	1.357	1.532	1.8	2.27	2.54	2.67	2.977	
Rated Power/ Speed (kW/r/min)	3.7/3000 4.0/3600	5.7/3000 6.3/3600	6.6/3000 7.2/3600	7.5/3000 8.2/3600	20/3000	24/3000	28/3000	36/3000	42/3000	45/3000	50/3000	
Horse Power	5.0/3000 5.5/3600	7.8/3000 8.6/3600	9.0/3000 10.0/3600	10.2/3000 12.0/3600	27	32	38	49	58	61	68	
Power Coverage(kW)	≤11	≤11	≤11	≤11	537	S37	^37	S55	^55	^55	S75	

Model	498	4102	4105	4108	485Z	490NZ	490Z	498Z	4102Z	4105Z	4108Z	
Type	Direct Injection. Water-cooling, Four Stroke											
Intake Type	Naturally Aspirated				Turbo-charging							
Bore*Stroke(mm · mm)	98*105	102*118	105*118	108*118	85*100	90*100	90*105	98*105	102*118	105*118	108*118	
Cylinder No.	4	4	4	4	4	4	4	4	4	4	4	
Displacement (L)	3.168	3.857	4.087	4.324	2.27	2.54	2.67	3.168	3.857	4.087	4.324	
Rated Power/ Speed (kW/r/min)	54/3000	62/3000	67/3000	73/3000	44/3000	50/3000	55/3000	60/3000	73/3000	75/3000	83/3000	
Horse Power	73	85	91	99	60	68	75	81	99	102	113	
Power Coverage(kW)	≤75	≤100	≤100	≤100	≤55	≤55	≤55	≤75	≤100	≤100	≤100	

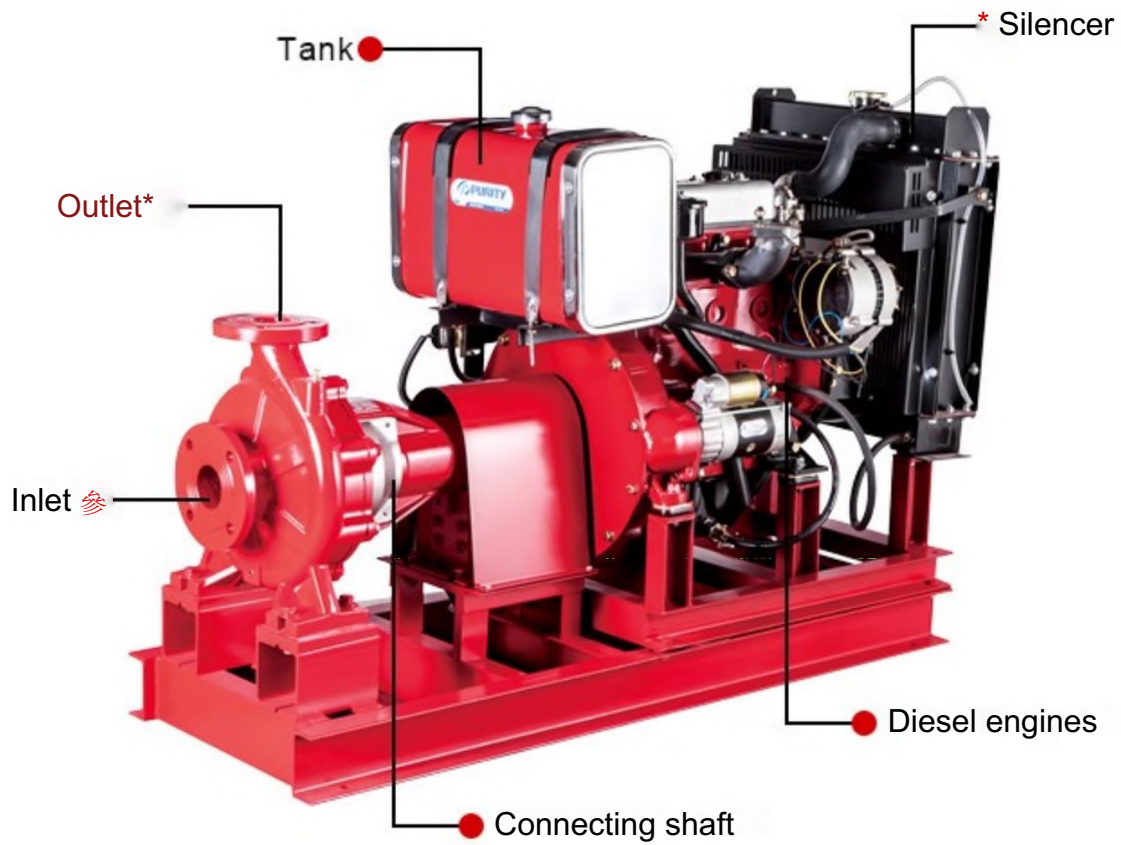
Fire Pump Coupling Diesel Engine



PRODUCT INFORMATION

電^

、;、凝n夕、





PS



PD

A combination

PS
+
PD
=
PSD



PSD

TECHNICAL DESCRIPTION

- ^More Environmentally Friendly
- ^Meeting China III Emission Standard
- ^Low Fuel Consumption
- x Strong Power
- ※ Easy To Assemble

APPLICATIONS

Suitable for use with clean water and liquids that are not chemically aggressive towards the materials from which the pump is made. The diesel engine pumps are recommended for use in water supply, cleaning sets, pressure boosting, firefighting sets, irrigation, industrial applications, water circulation in climatisation sets, agricultural.

USING LIMITS

Liquid temperature between -10°C and +120°C

Ambient temperature up to +50°C

Max. working pressure 16 bar

Continuous service S1

TECHNICAL DATAS

Model	178	186	188	192	380	385	480	485	490N	490	495	
Type	Single-cylinder, 4-stroke, air-cooled				Direct Injection, Water-cooling, Four Stroke							
Intake Type	Naturally Aspirated											
Bore*Stroke(mm*mm)	78*62	86*72	88*75	92*75	80*90	85*90	80*90	85*100	90*100	90*105	95*105	
Cylinder No.	1	1	1	1	3	3	4	4	4	4	4	
Displacement (L)	0.296	0.418	0.456	0.499	1.357	1.532	1.8	2.27	2.54	2.67	2.977	
Rated Power/Speed (kW/r/min)	3.7/3000 4.0/3600	5.7/3000 6.3/3600	6.6/3000 7.2/3600	7.5/3000 8.2/3600	20/3000	24/3000	28/3000	36/3000	42/3000	45/3000	50/3000	
Horse Power	5.0/3000 5.5/3600	7.8/3000 8.6/3600	9.0/3000 10.0/3600	10.2/3000 12.0/3600	27	32	38	49	58	61	68	
Power Coverage(kW)	≤11	≤11	≤11	≤11	537	S37	^37	S55	^55	^55	S75	

Model	498	4102	4105	4108	485Z	490NZ	490Z	498Z	4102Z	4105Z	4108Z	
Type	Direct Injection. Water-cooling, Four Stroke											
Intake Type	Naturally Aspirated				Turbo-charging							
Bore*Stroke(mm · mm)	98*105	102*118	105*118	108*118	85*100	90*100	90*105	98*105	102*118	105*118	108*118	
Cylinder No.	4	4	4	4	4	4	4	4	4	4	4	
Displacement (L)	3.168	3.857	4.087	4.324	2.27	2.54	2.67	3.168	3.857	4.087	4.324	
Rated Power/Speed (kW/r/min)	54/3000	62/3000	67/3000	73/3000	44/3000	50/3000	55/3000	60/3000	73/3000	75/3000	83/3000	
Horse Power	73	85	91	99	60	68	75	81	99	102	113	
Power Coverage(kW)	≤75	≤100	≤100	≤100	≤55	≤55	≤55	≤75	≤100	≤100	≤100	



Diesel Pumps PD

PD

TECHNICAL DESCRIPTION

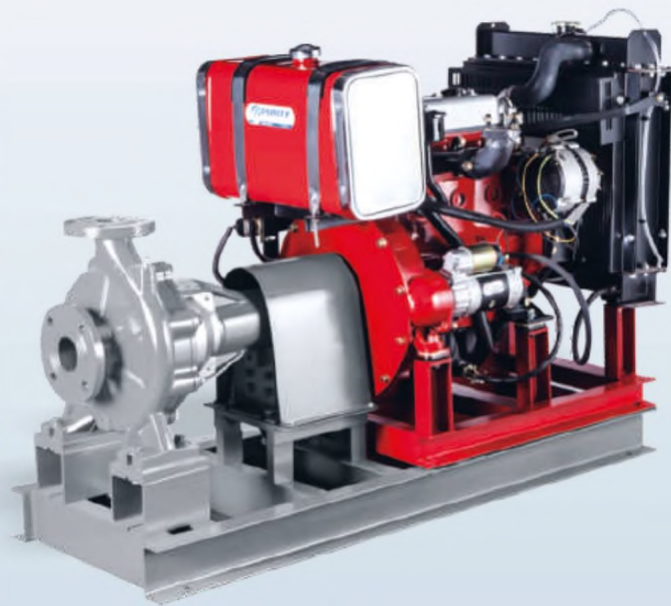
- More Environmentally Friendly
- Meeting China III Emission Standard
- Low Fuel Consumption
- Strong Power
- Easy To Assemble



PD

Diesel engine for pump

Diesel para bomba



NEW/NUEVO

TECHNICAL DESCRIPTION

- More Environmentally Friendly
- Meeting China III Emission Standard
- Low Fuel Consumption
- .Strong Power
- Easy To Assemble

USING LIMITS

- Liquid temperature between -10°C and $+120^{\circ}\text{C}$
- Ambient temperature up to $+50^{\circ}\text{C}$
- Max. working pressure 16 bar
- Continuous service S1

APPLICATIONS

- Suitable for use with clean water and liquids that are not chemically aggressive towards the materials from which the pump is made. The diesel engine pumps are recommended for use in water supply, cleaning sets, pressure boosting, firefighting sets, irrigation, industrial applications, water circulation in climatization sets, agricultural.

TECHNICAL DATA / DATOS TÉCNICOS

Model	178	186	188	192	380	385	480	485	490N	490	495
Type	Single-cylinder;4-stroke,air-cooled				Direct Injection, Water-cooling, Four Stroke						
Intake Type					Naturally Aspirated						
Bore*Stroke(mm*mm)	78*62	86*72	88*75	92*75	80*90	85*90	80*90	85*100	90*100	90*105	95*105
Cylinder No.	1	1	1	1	3	3	4	4	4	4	4
Displacement (L)	0.296	0.418	0.456	0.499	1.357	1.532	1.8	2.27	2.54	2.67	2.977
Rated Power/ Speed(kW/r/min)	3.7/3000 4.0/3600	5.7/3000 6.3/3600	6.6/3000 7.2/3600	7.5/3000 8.2/3600	20/3000	24/3000	28/3000	36/3000	42/3000	45/3000	50/3000
Horse Power	5.0/3000 5.5/3600	7.8/3000 8.6/3600	9.0/3000 10.0/3600	10.2/3000 12.0/3600	27	32	38	49	58	61	68
Power Coverage(kW)	≤11	≤11	≤11	≤11	≤37	≤37	≤37	≤55	≤55	≤55	≤75

Model	498	4102	4105	4108	485Z	490NZ	490Z	498Z	4102Z	4105Z	4108Z
Type	Direct Injection, Water-cooling, Four Stroke										
Intake Type	Naturally Aspirated				Turbo-charging						
Bore*Stroke(mm*mm)	98*105	102*118	105*118	108*118	85*100	90*100	90*105	98*105	102*118	105*118	108*118
Cylinder No.	4	4	4	4	4	4	4	4	4	4	4
Displacement (L)	3.168	3.857	4.087	4.324	2.27	2.54	2.67	3.168	3.857	4.087	4.324
Rated Power/ Speed(kW/r/min)	54/3000	62/3000	67/3000	73/3000	44/3000	50/3000	55/3000	60/3000	73/3000	75/3000	83/3000
Horse Power	73	85	91	99	60	68	75	81	99	102	113
Power Coverage(kW)	≤75	≤100	≤100	≤100	≤55	≤55	≤55	≤75	≤100	≤100	≤100

PD



Diesel enginefor pump
Diesel para bomba



NEW/NUEVO

TECHNICAL DESCRIPTION

- More Environmentally Friendly
- Meeting China III Emission Standard
- Low Fuel Consumption
- Strong Power
- Easy To Assemble

USING LIMITS

- Liquid temperature between -10°C and $+120^{\circ}\text{C}$
- Ambient temperature up to $+50^{\circ}\text{C}$
- Max. working pressure 16 bar
- Continuous service S1

APPLICATIONS

- Suitable for use with clean water and liquids that are not chemically aggressive towards the materials from which the pump is made. The diesel engine pumps are recommended for use in water supply, cleaning sets, pressure boosting, firefighting sets, irrigation, industrial applications, water circulation in climatisation sets, agricultural.

TECHNICAL DATA / DATOS itCNICOS

Model	178	186	188	192	380	385	480	485	490N	490	495
Type	Single-cylinder 4-stroke, air-cooled				Direct Injection, Water-cooling, Four Stroke						
Intake Type	Naturally Aspirated										
Bore*Stroke(mm*mm)	78*62	86*72	88*75	92*75	80*90	85*90	80*90	85*100	90*100	90*105	95*105
Cylinder No.	1	1	1	1	3	3	4	4	4	4	4
Displacement (L)	0296	0.418	0.456	0.499	1.357	1.532	13	227	254	267	2977
Rated Power/Speed (kW/r/min)	3.7/3000 4.0/3600	5.7/3000 6.3/3600	6.6/3000 7.2/3600	7.5/3000 8.2/3600	20/3000	24/3000	28/3000	36/3000	42/3000	45/3000	50/3000
Horse Power	5X/3000 SS/3600	7.8/3000 8.6/3600	9.0/3000 10.0/3600	10.2/3000 12.0/3600	27	32	38	49	58	61	68
Power Coverage(kW)	≤11	≤11	≤11	≤11	≤37	≤37	≤37	≤55	≤55	≤55	≤75

Model	498	4102	4105	4108	485Z	490NZ	490Z	498Z	4102Z	4105Z	4108Z
Type	Direct Injection, Water-cooling, Four Stroke										
Intake Type	Naturally Aspirated				Turbo-charging						
Bore*Stroke(mm*mm)	98*105	102*118	105*118	108*118	85*100	90*100	90*105	98*105	102*118	105*118	108*118
Cylinder No.	4	4	4	4	4	4	4	4	4	4	4
Displacement (L)	3.168	3357	4.087	4324	227	254	267	3.168	3.857	4.087	4.324
Rated Power/Speed (kW/r/min)	54/3000	62/3000	67/3000	73/3000	44/3000	50/3000	55/3000	60/3000	73/3000	75/3000	83/3000
Horse Power	73	85	91	99	60	68	75	81	99	102	113
Power Coverage(kW)	≤75	≤100	≤100	≤100	≤55	≤55	≤55	≤75	≤100	≤100	≤100



Diesel Pumps CHP

CHP Gasoline&Diesel Trash Water Pump Centrifugal Pump

Features

- 100% pure aluminum pump body and crankcase
- Durable and high performance Engine easy operating and offer ample power in the toughest conditions
- Isolation-mounted engine and pump vibration, preventing the pump from "walking" away or "burying" itself in soft soil and reduces wear on components for increased durability
- Reinforced hosing and chemical resistance volute and impeller

Product Description



Model	CHWP205B	CHWP305B	CHWP405B	CHWP205D	CHWP305D
Type	Self-priming centrifugal pump				
Suction*delivery(mm)(inch)	2"	3"	4"	50*50/2*2	80*80/3*3
Total Head(m)	46	32	28	46	32
Suction Head (m)	8	8	8	8	8
Max delivery volume(m3/h)	36	80	80	36	60
Mechanical seal	Ceramic Carbon				
Engine model	CH160	CH200	CH390	CH170F	CH178F(E)
Fuel tank capacity(L)	3.5	3.5	6	2.5	3.5
Starting system	Manual/Electric start				
Packing size(L*W*H)mm	485*385*380	510*385*425	625*455*545	535*445*495	590*500*535
Net weight(KG)	26	28	47	32	46



Diesel Pumps PSD

PSD centrifugal fire pumps coupling with diesel engine

TECHNICAL DESCRIPTION

- More Environmentally Friendly
- Meeting China III Emission Standard
- Low Fuel Consumption
- Strong Power
- Easy To Assemble

PD

Diesel engine for pump

Diesel para bomba



NEW/NUEVO

TECHNICAL DESCRIPTION

- More Environmentally Friendly
- Meeting China III Emission Standard
- Low Fuel Consumption
- .Strong Power

- Easy To Assemble

USING LIMITS

- Liquid temperature between -10°C and $+120^{\circ}\text{C}$
- Ambient temperature up to $+50^{\circ}\text{C}$
- Max. working pressure 16 bar
- Continuous service S1

APPLICATIONS

- Suitable for use with clean water and liquids that are not chemically aggressive towards the materials from which the pump is made. The diesel engine pumps are recommended for use in water supply, cleaning sets, pressure boosting, firefighting sets, irrigation, industrial applications, water circulation in climatization sets, agricultural.

TECHNICAL DATA / DATOS TECNICOS

Model	178	186	188	192	380	385	480	485	490N	490	495
Type	Single-cylinder;4-stroke.air-cooled				Direct Injection, Water-cooling, Four Stroke						
Intake Type					Naturally Aspirated						
Bore*Stroke(mm*mm)	78*62	86*72	88*75	92*75	80*90	85*90	80*90	85*100	90*100	90*105	95*105
Cylinder No.	1	1	1	1	3	3	4	4	4	4	4
Displacement (L)	0.296	0.418	0.456	0.499	1.357	1.532	1.8	2.27	2.54	2.67	2.977
Rated Power/ Speed(kW/r/min)	3.7/3000 4.0/3600	5.7/3000 6.3/3600	6.6/3000 7.2/3600	7.5/3000 8.2/3600	20/3000	24/3000	28/3000	36/3000	42/3000	45/3000	50/3000
Horse Power	5.0/3000 5.5/3600	7.8/3000 8.6/3600	9.0/3000 10.0/3600	10.2/3000 12.0/3600	27	32	38	49	58	61	68
Power Coverage(kW)	≤11	≤11	≤11	≤11	≤37	≤37	≤37	≤55	≤55	≤55	≤75

Model	498	4102	4105	4108	485Z	490NZ	490Z	498Z	4102Z	4105Z	4108Z
Type	Direct Injection, Water-cooling, Four Stroke										
Intake Type	Naturally Aspirated				Turbo-charging						
Bore*Stroke(mm*mm)	98*105	102*118	105*118	108*118	85*100	90*100	90*105	98*105	102*118	105*118	108*118
Cylinder No.	4	4	4	4	4	4	4	4	4	4	4
Displacement (L)	3.168	3.857	4.087	4.324	2.27	2.54	2.67	3.168	3.857	4.087	4.324
Rated Power/ Speed(kW/r/min)	54/3000	62/3000	67/3000	73/3000	44/3000	50/3000	55/3000	60/3000	73/3000	75/3000	83/3000
Horse Power	73	85	91	99	60	68	75	81	99	102	113
Power Coverage(kW)	≤75	≤100	≤100	≤100	≤55	≤55	≤55	≤75	≤100	≤100	≤100

PD



Diesel enginefor pump
Diesel para bomba



NEW/NUEVO

TECHNICAL DESCRIPTION

- More Environmentally Friendly
- Meeting China III Emission Standard
- Low Fuel Consumption
- .Strong Power
- Easy To Assemble

USING LIMITS

- Liquid temperature between -10°C and +120°C
- Ambient temperature up to +50°C
- Max. working pressure 16 bar
- Continuous service S1

APPLICATIONS

- Suitable for use with clean water and liquids that are not chemically aggressive towards the materials from which the pump is made. The diesel engine pumps are recommended for use in water supply, cleaning sets, pressure boosting, firefighting sets, irrigation, industrial applications, water circulation in climatisation sets, agricultural.

TECHNICAL DATA / DATOS *itCNICOS*

Model	178	186	188	192	380	385	480	485	490N	490	495
Type	Single-cylinder 4-stroke, air-cooled				Direct Injection, Water-cooling, Four Stroke						
Intake Type	Naturally Aspirated										
Bore*Stroke(mm*mm)	78*62	86*72	88*75	92*75	80*90	85*90	80*90	85*100	90*100	90*105	95*105
Cylinder No.	1	1	1	1	3	3	4	4	4	4	4
Displacement (L)	0296	0.418	0.456	0.499	1.357	1.532	13	227	254	267	2977
Rated Power/Speed (kW/r/min)	3.7/3000 4.0/3600	5.7/3000 6.3/3600	6.6/3000 7.2/3600	7.5/3000 8.2/3600	20/3000	24/3000	28/3000	36/3000	42/3000	45/3000	50/3000
Horse Power	5X/3000 SS/3600	7.8/3000 8.6/3600	9.0/3000 10.0/3600	10.2/3000 12.0/3600	27	32	38	49	58	61	68
Power Coverage(kW)	≤11	≤11	≤11	≤11	≤37	≤37	≤37	≤55	≤55	≤55	≤75

Model	498	4102	4105	4108	485Z	490NZ	490Z	498Z	4102Z	4105Z	4108Z
Type	Direct Injection, Water-cooling, Four Stroke										
Intake Type	Naturally Aspirated				Turbo-charging						
Bore*Stroke(mm*mm)	98*105	102*118	105*118	108*118	85*100	90*100	90*105	98*105	102*118	105*118	108*118
Cylinder No.	4	4	4	4	4	4	4	4	4	4	4
Displacement (L)	3.168	3.357	4.087	4.324	227	254	267	3.168	3.857	4.087	4.324
Rated Power/Speed (kW/r/min)	54/3000	62/3000	67/3000	73/3000	44/3000	50/3000	55/3000	60/3000	73/3000	75/3000	83/3000
Horse Power	73	85	91	99	60	68	75	81	99	102	113
Power Coverage(kW)	≤75	≤100	≤100	≤100	≤55	≤55	≤55	≤75	≤100	≤100	≤100



Diesel Pumps CHP

CHP Water Pump-High Pressure Cast Iron Diesel Water Pump Centrifugal Pump

Features

- 100% pure aluminum pump body and crankcase
- Durable and high performance Engine easy operating and offer ample power in the toughest conditions
- .Isolation-mounted engine and pump vibration.perventing the pump from "walking"away or "buurying"itself in soft soil and reduces wear on components for increased durability
- Reinforced hosing and chemical resistance volute and impeller

Product Specification (50HZ)



Model	CHP-15D(E)	CHP-20D(E)
Type	Self-priming centrifugal pump	
Suction*delivery(mm)(inch)	40*40/1.5*1.5	50*50/40 2*2/1.5
Total Head(m)	65	55
Suction Head (m)	7	7
Max delivery volume(m3/h)	20	30
Mechanical seal	Ceramic Carbon	
Engine model	CH173F	CH178F
Fuel tank capacity(L)	2.5	2.5
Starting system	Manual/Electric start	
Packing size(L*W*H)mm	535*445*495	
Net weight(KG)	32	32

Model	CHP-50DEI	CHP80DEI	CHP100DEI
Type	Self-priming centrifugal pump		
Suction*delivery(mm)(inch)	2"	3"	4"
Total Head(m)	85	75	55
Suction Head (m)	6	6	6
Max delivery volume(m3/h)	35	42	120
Mechanical seal	Ceramic Carbon		
Engine model	CH178F	CH186FA(E)	CH192F(E)
Fuel tank capacity(L)	5.5	5.5	5.5
Starting system	Manual/Electric start		
Packing size(L*W*H)mm	580*490*570	580*490*630	585*490*635
Net weight(KG)	72	68	72

Product Specification (60HZ)



Model	CHP-15D(E)	CHP-20D(E)
Type	Self-priming centrifugal pump	
Suction*delivery(mm)(inch)	40*40/1.5*1.5	50*50/40 2*2/1.5
Total Head(m)	65	55
Suction Head (m)	7	7
Max delivery volume(m ³ /h)	20	30
Mechanical seal	Ceramic Carbon	
Engine model	CH173F	CH178F
Fuel tank capacity(L)	2.5	2.5
Starting system	Manual/Electric start	
Packing size(L*W*H)mm	535*445*495	
Net weight(KG)	32	32

Model	CHP-50DEI	CHP80DEI	CHP100DEI
Type	Self-priming centrifugal pump		
Suction*delivery(mm)(inch)	2"	3"	4"
Total Head(m)	85	75	55
Suction Head (m)	6	6	6
Max delivery volume(m ³ /h)	35	42	120
Mechanical seal	Ceramic Carbon		
Engine model	CH178F	CH186FA(E)	CH192F(E)
Fuel tank capacity(L)	5.5	5.5	5.5
Starting system	Manual/Electric start		
Packing size(L*W*H)mm	580*490*570	580*490*630	585*490*635
Net weight(KG)	72	68	72



Diesel Pumps CHP

CHP Water Pump Diesel Clear Water Pump(big fuel tank) Centrifugal Pump

Features

- 100% pure aluminum pump body and crankcase
- Durable and high performance Engine easy operating and offer ample power in the toughest conditions
- Isolation-mounted engine and pump vibration, preventing the pump from "walking" away or "burying" itself in soft soil and reduces wear on components for increased durability
- Reinforced hosing and chemical resistance volute and impeller

Product Description



Model	CHP-205D(E)-1	CHP-305D(E)-1	CHP-405D(E)-1
Type	Self-priming centrifugal pump		
Suction*delivery(mm)(inch)	50*50/2*2	80*80/3*3	100*100/4*4
Total Head(m)	46	32	28
Suction Head (m)	8	8	8
Max delivery volume(m ³ /h)	36	60	80
Mechanical seal	Ceramic Carbon		
Engine model	CH170F(E)	CH178F(E)	CH186F(E)
Fuel tank capacity(L)	12.5	12.5	12.5
Starting system	Manual/Electric start		
Packing size(L*W*H)mm	535*464*615	590*465*660	690*510*720
Net weight(KG)	38	50	70

По вопросам продаж и поддержки обращайтесь:

Алматы (7273)495-231	Казань (843)206-01-48	Новокузнецк (3843)20-46-81	Смоленск (4812)29-41-54
Архангельск (8182)63-90-72	Калининград (4012)72-03-81	Новосибирск (383)227-86-73	Сочи (862)225-72-31
Астрахань (8512)99-46-04	Калуга (4842)92-23-67	Омск (3812)21-46-40	Ставрополь (8652)20-65-13
Барнаул (3852)73-04-60	Кемерово (3842)65-04-62	Орел (4862)44-53-42	Сургут (3462)77-98-35
Белгород (4722)40-23-64	Киров (8332)68-02-04	Оренбург (3532)37-68-04	Тверь (4822)63-31-35
Брянск (4832)59-03-52	Краснодар (861)203-40-90	Пенза (8412)22-31-16	Томск (3822)98-41-53
Владивосток (423)249-28-31	Красноярск (391)204-63-61	Пермь (342)205-81-47	Тула (4872)74-02-29
Волгоград (844)278-03-48	Курск (4712)77-13-04	Ростов-на-Дону (863)308-18-15	Тюмень (3452)66-21-18
Вологда (8172)26-41-59	Липецк (4742)52-20-81	Рязань (4912)46-61-64	Ульяновск (8422)24-23-59
Воронеж (473)204-51-73	Магнитогорск (3519)55-03-13	Самара (846)206-03-16	Уфа (347)229-48-12
Екатеринбург (343)384-55-89	Москва (495)268-04-70	Санкт-Петербург (812)309-46-40	Хабаровск (4212)92-98-04
Иваново (4932)77-34-06	Мурманск (8152)59-64-93	Саратов (845)249-38-78	Челябинск (351)202-03-61
Ижевск (3412)26-03-58	Набережные Челны (8552)20-53-41	Севастополь (8692)22-31-93	Череповец (8202)49-02-64
Иркутск (395)279-98-46	Нижний Новгород (831)429-08-12	Симферополь (3652)67-13-56	Ярославль (4852)69-52-93
Россия (495)268-04-70	Киргизия (996)312-96-26-47	Казахстан (7172)727-132	